

Scissor Holder (finished size 6 ¼ to 6 ½ not including ribbon)

Materials

1. **Fabric** (mannequin) – 1/4 yd., Fat Quarter, 2 - 10 inch squares cotton, linen, and wool, felt, home dec. etc.
2. **Quilt batting** – approx. 8"X4" square
3. **Ribbon** –6 inch piece (width 1/4" to 3/8")
4. **Optional Embellishments** (decorative stitches, lace, buttons, etc.)

Cutting:

Cut 2 – mannequin fabric (you can fussy cut too!)

Cut 2 – pocket fabric (can be same as mannequin or contrast)

Cut 1 – mannequin quilt batting

Mannequin

Step 1: Pocket assembly

With wrong sides together fold top of pocket down twice to meet the fold line (raw edges are turned under), top stitch the folded edge across the pocket. See template for fold line.

Option 1: Mannequin Assembly

Mannequin Front: Place pocket on **right side of 1-mannequin fabric (this will be front of mannequin)**, be sure the edges and bottom match.

Mannequin Back: Place and baste or pin **6" ribbon folded in half to right side** of 1-mannequin fabric (raw edge to seam allowance, ribbon rests on fabric back) (see template for placement), place **batting on wrong side of fabric**.

Place mannequin back to mannequin front right sides together and pin if necessary to keep pocket in place and layers secure.

Sew using 1/4 inch seam allowance, starting 1/2 inch from bottom (see template mark), and leave bottom edge open for turning the mannequin right side out. After turning press, tuck open edge in, and either slip stitch closed or top stitch around entire mannequin 1/8 to scant 1/4 inch.

Option 2: Mannequin Assembly (no turning right side out)

Make pocket as in step 1 (see page 1).

Mannequin Front: Place pocket on **right side of 1-mannequin fabric (this will be front of mannequin)**, be sure the edges and bottom match. Trim if necessary to get a clean edge.

Mannequin Back: Place or baste ribbon folded in half to **back, wrong side of mannequin back fabric**, (raw edge of ribbon approx. ¼ inch from back edge, loop is free from fabric) (see template for placement), place **batting on wrong side of fabric back**.

Layer the mannequin wrong sides together so you are looking at the right side of front with pocket, ribbon loop is visible out of neck and right side of mannequin back is visible (on back) making a sandwich. Pin as is necessary to keep layers in place.

Using decorative stitch on your sewing machine sew the mannequin together (zig-zag, blanket stitch, etc.) be creative. You can hand sew the layers together using decorative stitching.

Search the internet or Pinterest using “Scissor Mannequin” for examples.



Half-square Pincushion (finished size 3 inches)

Materials needed:

1. 2 – 3 ½-inch half-square triangles (can be 2 different half-square triangles)
2. Poly fill or crushed walnut shells to fill pincushion firm

Assembly:

Option to embellish with hand or machine stitching prior to sewing squares together.

Sew two half-square triangles right sides together leaving an opening (approx. 2”) on one side for stuffing. Turn right side out, ease corner points out, press.

Stuff square firm with poly fill or crushed walnut shells and slipstitch or other stitch to close opening. This example was embellished with hand stitches after stuffing around edge and across seam.



Gift Card Holder (two options)

Option 1: Materials Needed (finished size approx. 4 3/4”)

1. Fabric – felt, wool, cottons, firm or fabrics with weight work well (9X6” scrapes work)
2. Ribbon –6 inches (1/8 inch width) or firm string for hanging

Optional - Embellishments (buttons, decorative stitches, cut outs to applique)

To make:

Cut out shape using template, mark-cutting line with chalk or other marker.

If using other than felt, consider folding down top of fold scant 1/4 inch, and top stitch. Fold fabric to fold line, press well on fold line. Embellish using buttons, cut out shapes or decorative stitches by machine or hand sew.

Sew by machine 1/8 inch around entire outside of shape catching folded edge, or hand sew around shape.

Add ribbon using large eye needle (doll or darning needle) pull through and knot on top to form loop. You can use hole-punch instead.



Option 2: (Finished folded size is approx. 2 1/2 X 4")

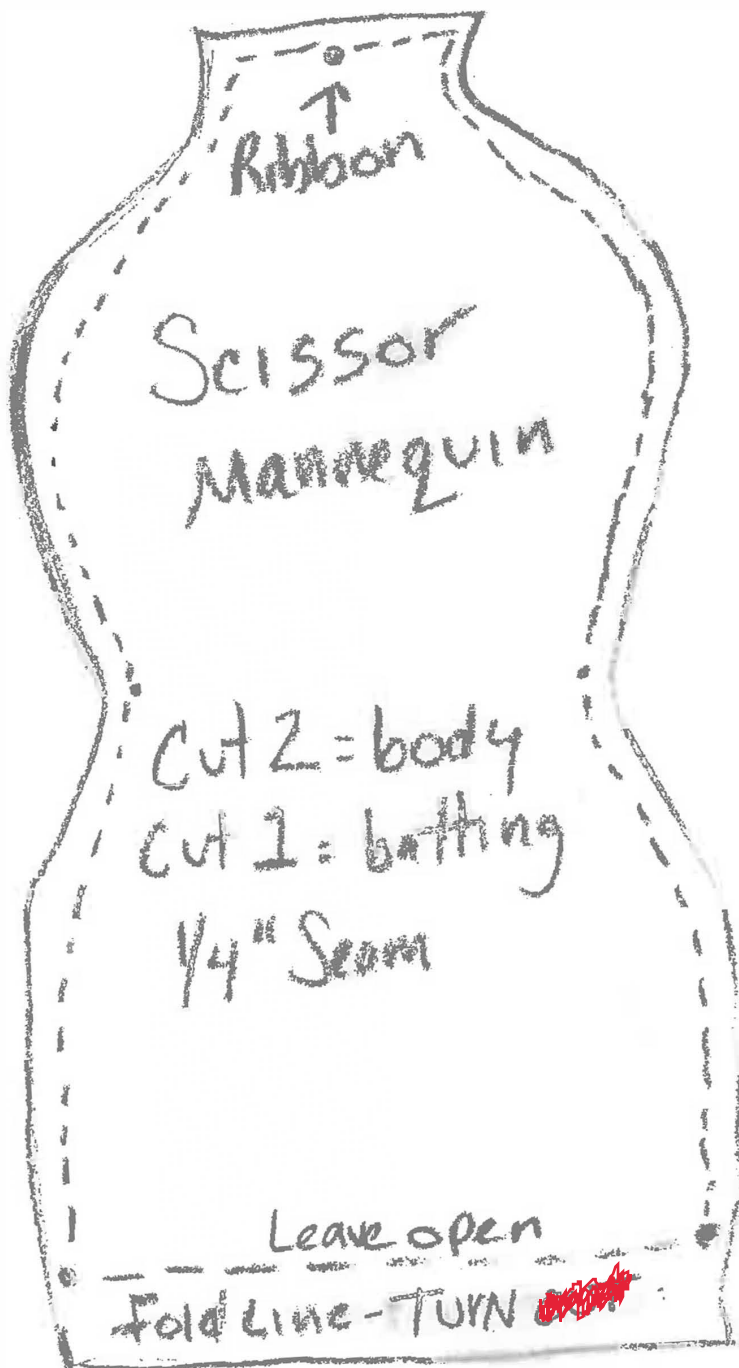
Materials

1. Fabric: cotton, wool, flannel, home dec (outside and lining)
2. Interfacing (optional) use if the fabric is delicate or loose weave
3. Fastener (Hook and loop (max 3/4"sq.) tape or other)

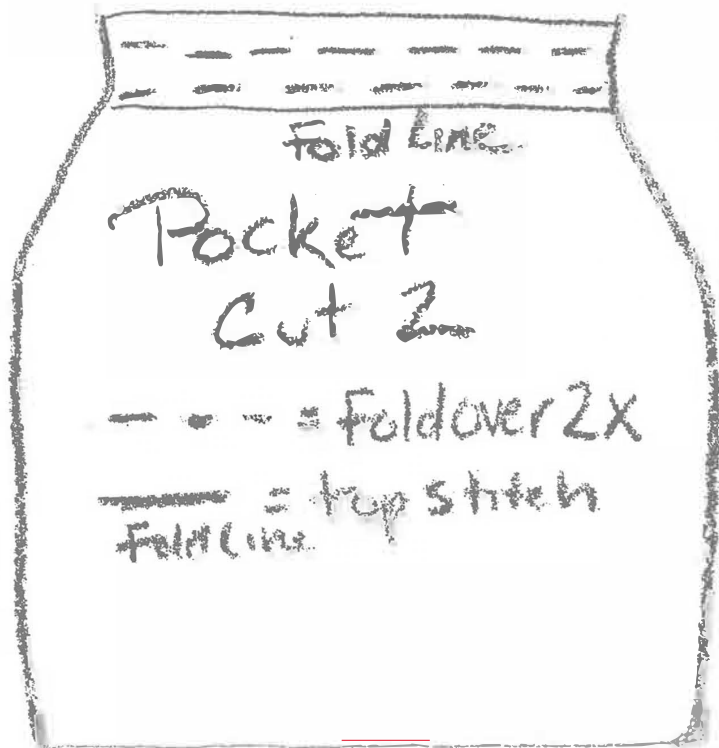
To Make:

1. Cut out 1 template shape from the cover and lining fabric and interfacing (optional).
2. Fuse or sew 1-fastener piece to right side of cover fabric measure about 1/2 inch from bottom edge (see template).
3. Optional - Fuse or sew interfacing to wrong side of cover fabric.
4. Fuse or sew 1-fastener to right side of lining fabric measure about 1/2 inch from top edge (see template).
5. With right sides together (cover and lining fabric), sew using 1/4 inch seam, leave opening to turn right side out.
6. Clip around curved edge and corners as needed.
7. Turn right side out, press; tuck open edge in, press, top stitch around all the edges.
8. Fold bottom edge up 2 inches to make a slot/pocket (lining should be on the inside).
9. Top stitch around to set fold making the pocket.
10. Fold top down aligning fastener, press to create a firm fold.





USE THIS
for option 1
Stitch and turn RIGHT
side out.



USE THIS for
option 2

Layer & Dec stitch
around Edges to
complete

